

# BENSON

## INTERNATIONAL

ACQUISITION | SALES | INVESTMENT



## 182 Lonsdale Drive

Oakwood, Enfield, EN2 7JU

£1,150,000

A freehold semi-detached house that has been beautifully renovated and extended on the ground floor to provide the perfect home for entertaining and luxury family living.

Situated on one of Oakwood's most desirable roads, the house boasts uninterrupted views of the picturesque Boxer's Lake and is conveniently located for Oakwood Station (Picadilly Line) and the various shops and restaurants that Oakwood and the surrounding areas has to offer – notably Cockfosters.

This home also benefits from being within the catchment for some of the most renowned schools, for example, Eversley Primary School and is also within easy reach to Trent Country Park.

### Key Features:

- Semi-detached house
- Gated entrance
- Three bedrooms
- Two reception rooms
- Extended and renovated on ground floor
- Substantial scope to further extend STPP
- Lutron lighting

### Viewing

Please contact our Mayfair Office on +44(0)20 7268 4892 if you wish to arrange a viewing appointment for this property or require further information.



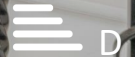
3



1

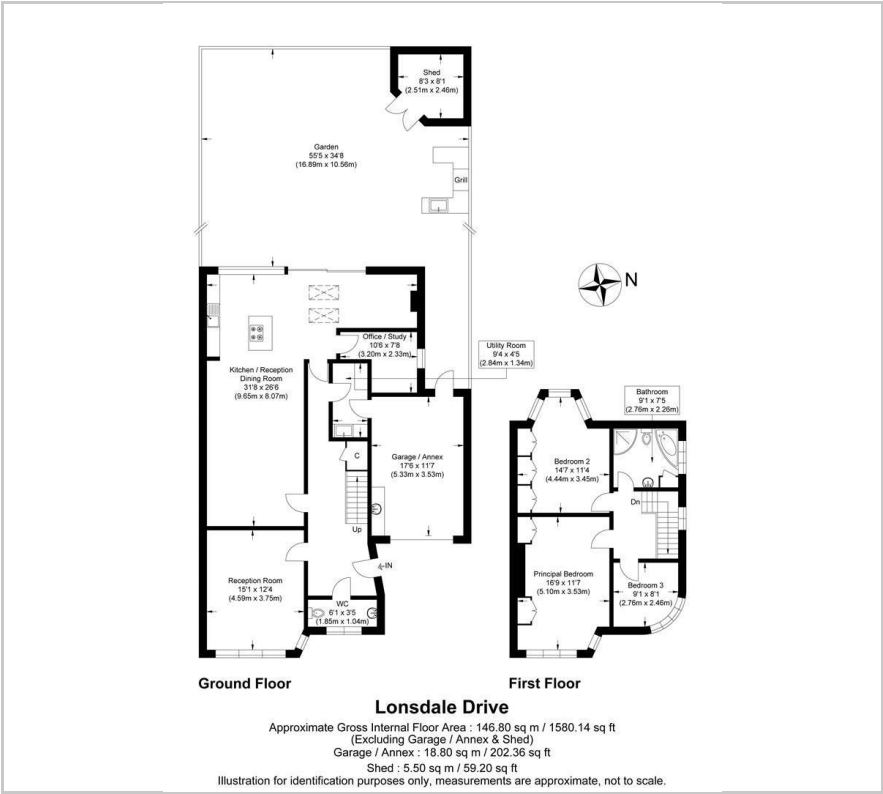


2



D

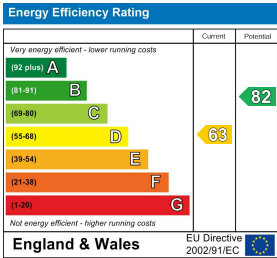
Floor Plan



Area Map



Energy Efficiency Graph



These particulars, whilst believed to be accurate are set out as a general outline only for guidance and do not constitute any part of an offer or contract. Intending purchasers should not rely on them as statements of representation of fact, but must satisfy themselves by inspection or otherwise as to their accuracy. No person in this firms employment has the authority to make or give any representation or warranty in respect of the property.